


# Spirit



Details:

|   |  |
|---|--|
|  |  |
| Horse Information   |  |
| Type:   | Horse                                      |
| Coat Name:  | Spirit                                     |
| Coat Color:   | Buckskin                                   |
| Markings:   | Black Points<br>Brown tinged mane and tail |
| Eye Color:  | Light Gray                                 |
| Coat Information  |  |
| Data Value:   | 7  |
| Obtainable:   | Lapis / Redstone                           |
| Category:   | Base Coats (18)                            |
| Version Added:  | V1 (Alpha)                                 |
| Artist:   | Stardust                                   |

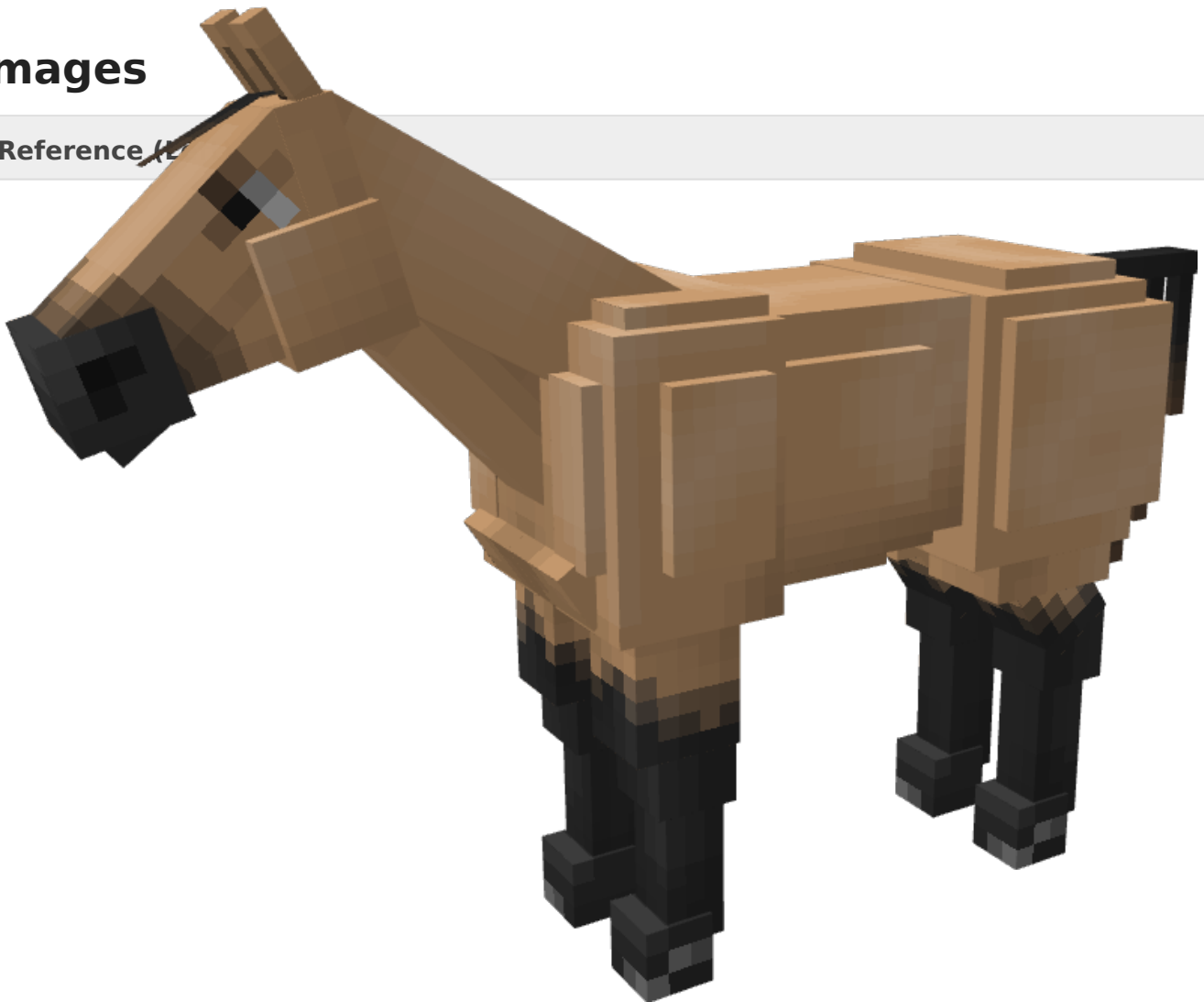
## Trivia

Spirit, along with companions [Rain](#) and [Esperanza](#) are inspired by and named after characters from the hugely popular 2002 DreamWorks Animation film *Spirit: Stallion of the Cimarron*.

In the movie, Spirit is actually a Dun horse, more accurately a 'Dunskin' for his buckskin coat and the presence of primitive markings such as a dorsal stripe. In SWEM, Spirit not being a dun was an error made very early into development due to lack of knowledge on genetics and coat colours. Though genetically incorrect to it's true reference, the original has remained in game. Hannah awaits the angry hoard of avid movie-inaccuracy fiends showing up on her door to this day.

## Images

Reference (Left)



Reference (Right)



Revision #13

Created 15 June 2022 01:47:28 by Delphi

Updated 9 June 2023 21:20:08 by Delphi