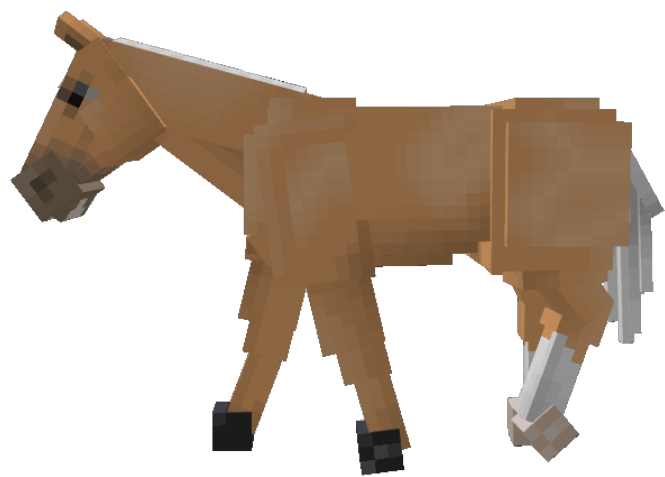


# Mr Ed



Details:

	
Horse Information	
Type:	Horse
Coat Name:	Mr Ed
Coat Color:	Palomino
Markings:	White Star & Stripe Pink Muzzle Snip Black Hooves (LF, RF) White Socks (LH, RH)
Eye Color:	Gray
Coat Information	
Data Value:	#25
Obtainable:	Lapis / Redstone
Category:	Historical Horses
Version Added:	V1 (Beta)
Artist:	Stardust

---

# Trivia



Mister Ed is an American television sitcom produced by Filmways that aired from January 5 to July 2, 1961 to February 6, 1966. The show's title character is a talking horse. All 143 episodes were filmed in black and white. The show in effect had two leads operating as a comedy team.

The title role of Mister Ed, a talking palomino, was played by gelding Bamboo Harvester and voiced by former Western film actor Allan Lane. The role of Ed's owner, a genial but somewhat klutzy architect named Wilbur Post, was played by Alan Young. The Posts resided at 17230 Valley Spring Road in the San Fernando Valley of Los Angeles. Many of the program's gags follow from Mister Ed's tendency to talk only to Wilbur, his mysteriously well cultured essence, his rascalion tendencies, and his precociously human-like behavior that far exceeds anything those around Wilbur expect of a horse. Mister Ed's ability to talk was never explained and rarely contemplated on the show. In the first episode, when Wilbur expresses an inability to understand the situation, Mister Ed offers the show's only remark on the subject: "Don't try. It's bigger than both of us!" The gelding won four PATSY (Performing Animal Top Star Of The Year) for his role as Mister Ed. Wilbur Post, recalled how the crew put peanut butter in the horse's mouth to get him to move his lips.

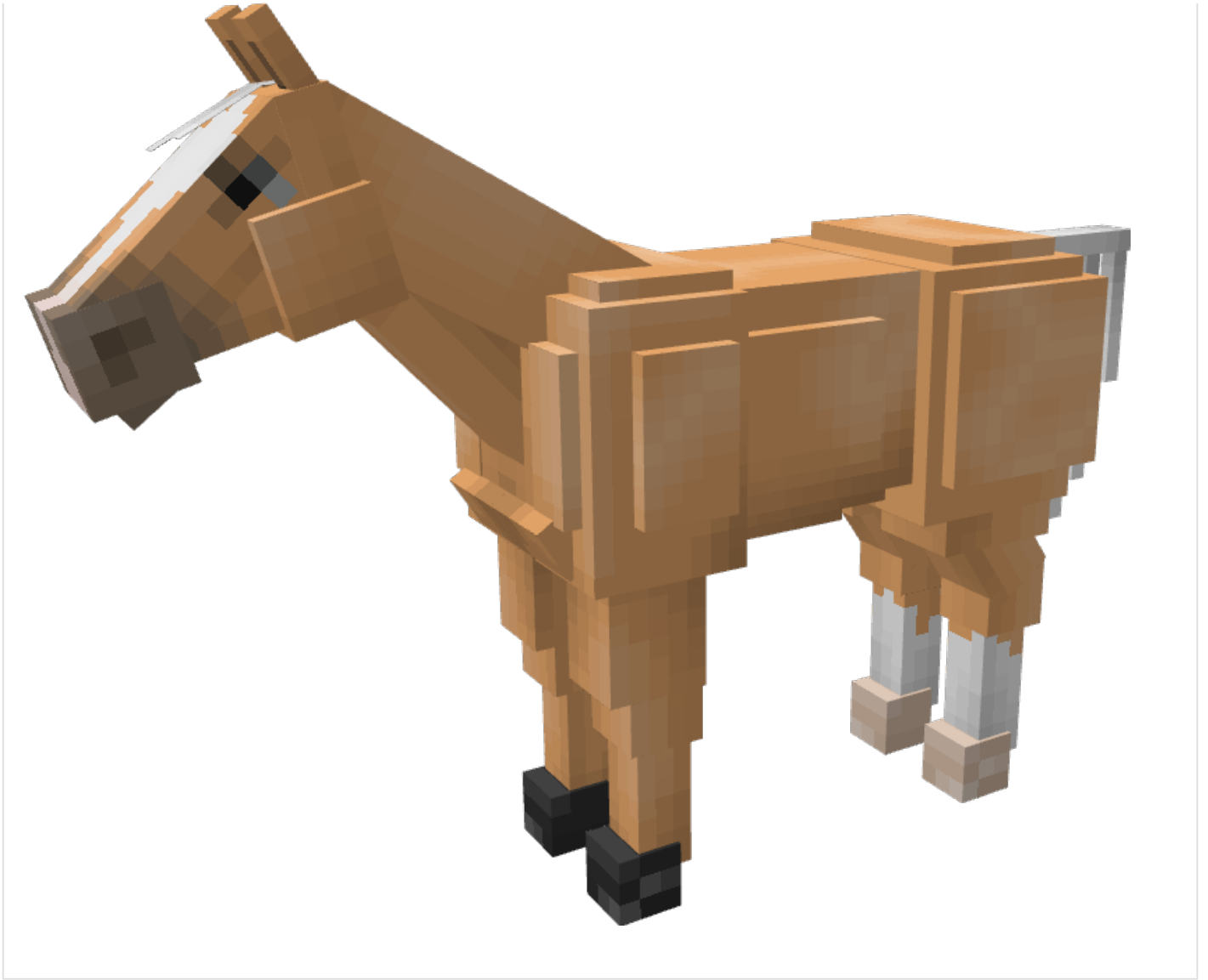
Mister Ed was said to be a bit of a diva. Filming typically wrapped for the day when Bamboo Harvester would reportedly walk off the set and "call it quits." Though Mister Ed was a bit of a diva, he could often get scenes done in one shot. He had a rather unique diet, as he ate 20 pounds of hay a day and drank sweet tea by the gallon. The show is often most recognized for its catchy theme song! [https://www.youtube.com/watch?v=tkksL5KYC\\_c](https://www.youtube.com/watch?v=tkksL5KYC_c)

Mr. Ed is the horse used in SWEM's Spirit: Stallion of the Cimarron tribute to represent Esperanza (Spirit's mother) instead of the actual Esperanza coat!

---

# Images

Reference (Left)



Reference (Right)



Revision #10

Created 27 June 2022 19:23:51 by Delphi

Updated 10 June 2023 06:20:08 by Delphi