

# Grain Feeder

**Description:** A Grain Feeder is a block that can hold [Sweet Feed](#) or [Rose Feed](#). It comes in 16 colors.

## Details:

<b>Renewable:</b>	Yes
<b>Stackable:</b>	Yes (64)
<b>Tool:</b>	Pickaxe (Any)
<b>Blast Resistance:</b>	N/A
<b>Hardness:</b>	N/A
<b>Luminant:</b>	No
<b>Transparent:</b>	No
<b>Flammable:</b>	No
<b>Flammable (Lava):</b>	No

## Obtaining

### Crafting

Grain feeders come in 16 Minecraft colors.

A Grain Feeder is crafted with 1 Dried Kelp, 1 Bucket and 1 Dye of a corresponding color.



## Usage

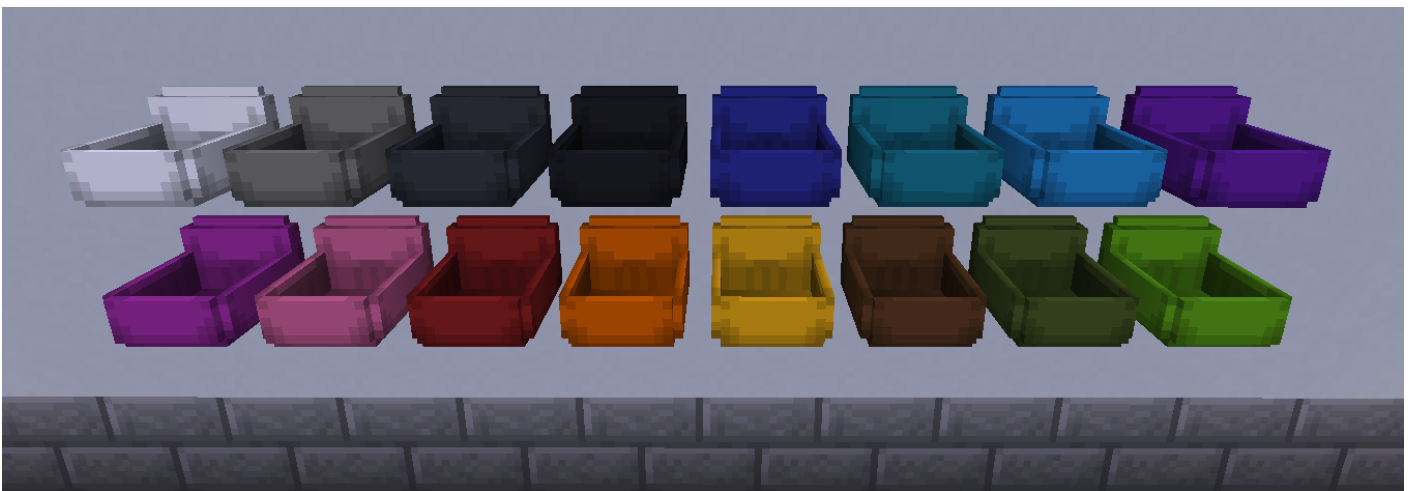
Grain feeders can hold 1 portion of [Sweet Feed](#) or [Rose Feed](#), right-click a feeder with an open bag in hand to provide one serving. When grains are added, the texture will change indicating the the feeder is full. [Horses](#) will eat from accessible grain and [hay-feeders](#) when hungry.

## Placement

Right-click a block with a grain feeder in hand to place it against a vertical (wall) block. When a grain feeder is placed at the intersection of two blocks, it connects to the wall on both corners. The recommended placement of grain feeders is around one block up from the ground, or two for near full-thickness shavings areas of stalls.



**Shown (L-R):** Corner grain feeder, grain feeder, grain feeder with sweet feed and grain feeder with rose feed.



**Shown (L-R):** All 16 color variants of grain feeders in the normal (non-corner) placement.

---

## Known Issues

If you find an issue, please report it to our bugs channel on [Discord](#). We ask that you look to see if your issue was reported first!


- [~] Horses may not be able to access feeders (hay or grain) that are surrounded by shavings on all sides. This issue can often be resolved by making sure feeders are clear

from surrounding shavings, or raised slightly higher.

## Changelog

### View Changes

This is not a complete list of version changes / fixes. It is a changelog of relevant wiki-related version information.

MC Version	Release	Notes
1.18.2	1.18.2-1.3.0-8	<b>[Bug Fix]</b> Grain feeders no longer drop a full bag on breaking.
	1.18.2-1.2.1	Grain feeders accept new <a href="#">rose feed</a> .
		<b>[Bug Fix]</b> Grain feeders display sweet feed.
1.18.2-1.0.0	Grain Feeder recipe changed to use dried kelp (plastic substitute).	
1.16.5	1.16.5-0.5.3.21	<b>[Deprecated Recipe]</b> 

## Data values

swem:grain\_feeder\_white  
swem:grain\_feeder\_light\_gray  
swem:grain\_feeder\_gray  
swem:grain\_feeder\_black  
swem:grain\_feeder\_blue  
swem:grain\_feeder\_cyan  
swem:grain\_feeder\_light\_blue  
swem:grain\_feeder\_purple  
swem:grain\_feeder\_magenta  
swem:grain\_feeder\_pink

swem:grain\_feeder\_red  
swem:grain\_feeder\_orange  
swem:grain\_feeder\_yellow  
swem:grain\_feeder\_brown  
swem:grain\_feeder\_green  
swem:grain\_feeder\_lime

---

Revision #22

Created 2021-04-26 21:57:01 UTC

Updated 2026-05-07 12:08:03 UTC by Delphi