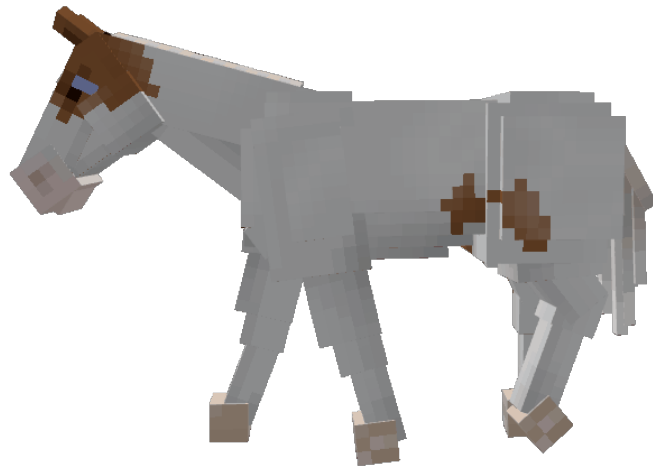


Annie



Details:

Horse Information	
Type:	Horse
Coat Name:	Annie
Coat Color:	Chestnut Tovero
Markings:	Pink Muzzle Chestnut Medicine Hat Chest marking (Small - R) Chestnut Markings Pale Hooves (LF, RF, LH, RH)
Eye Color:	Light Blue
Coat Information	
Data Value:	#104
Obtainable:	Lapis / Redstone
Category:	Staff Appreciation
Version Added:	V1 (Beta)
Artist:	Lace

Trivia

Annie is the staff appreciation of SWEM admin Lace.

Annie is (at the time of writing) the only coat to be created by a staff member who is not *generally* considered a coat artist (though Lace's skillset is incredibly versatile and she has done both texture art and animations alongside her other roles in research, as a senior builder and an admin).

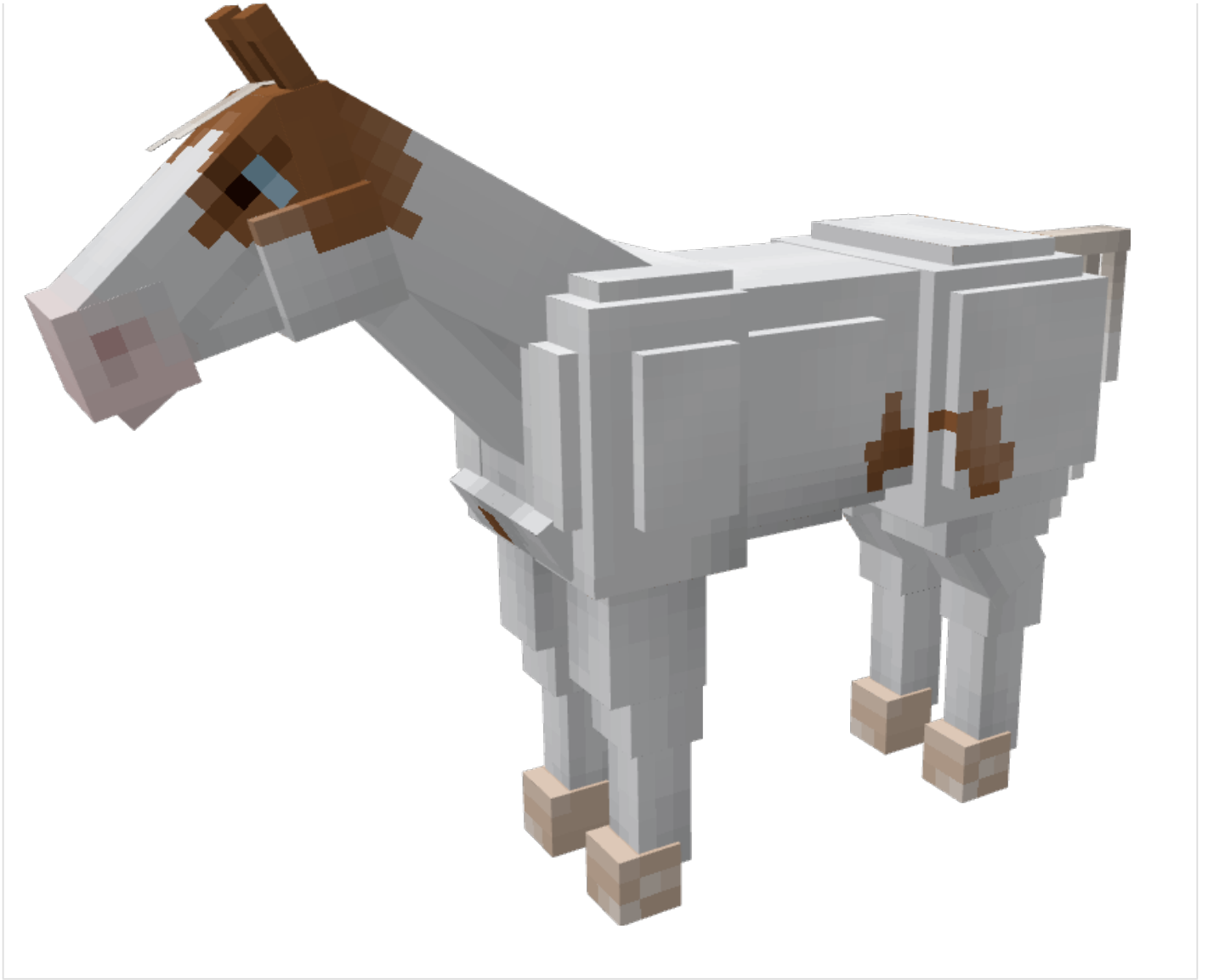
In Red Dead Online (RDO), Annie is a chestnut 'Tovero' mustang favoured by Lace for her speed, stamina and loyalty in the face of danger. Or as Lace put it; *"She's the only horse that doesn't dump me off at every scary thing she sees. She's a great horse for offroading trails, she's kind of just my dependable girl!"*

As a Tovero, Annie has combined markings of both Frame Overo and Tobiano, which results in an extensively white horse. This type of horse, where colour is removed from most areas except the head and occasionally small patches elsewhere, may be referred to as a medicine hat. Annie, like many medicine hat horses (Tovero), has blue eyes!

Images

Reference (Left)





Reference (Right)



Revision #3

Created 2022-07-18 04:45:47 UTC by Delphi

Updated 2023-06-10 06:20:09 UTC by Delphi